



Trends 2017

# Color Revelation

**CIN**

Trends 2017

The soul of a colour  
is revealed in its pure state,  
an essential emotion born  
of a force of nature.



Discover more inspiration  
[colorrevelation.com](http://colorrevelation.com)



Neutral  
Revelation



Red  
Revelation



Color of  
the season



Blue  
Revelation



Green  
Revelation



# Color Revelation

Discover four colour ranges with  
different hues to express your emotions  
and reveal your inner world.



Discover more inspiration  
[colorrevelation.com](http://colorrevelation.com)

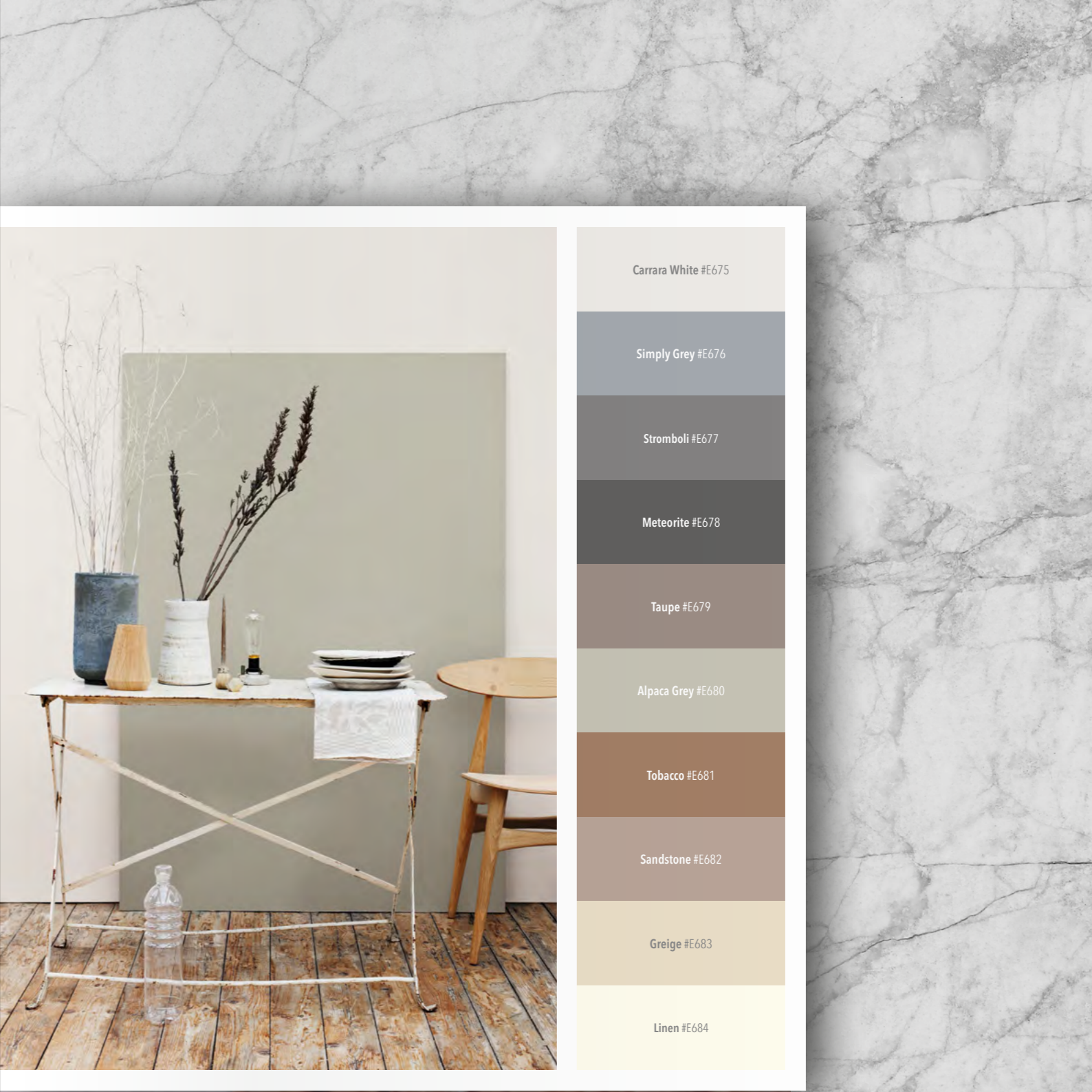


Trends 2017

# Neutral Revelation

Colours, materials and textures  
that convey purity in the quest for  
balance and serenity.

Color Revelation



- Carrara White #E675
- Simply Grey #E676
- Stromboli #E677
- Meteorite #E678
- Taupe #E679
- Alpaca Grey #E680
- Tobacco #E681
- Sandstone #E682
- Greige #E683
- Linen #E684

## Neutral Revelation

● **Carrara White** #E675. The natural elegance of the famous Carrara marble inspires this refined, slightly greyish white.

● **Simply Grey** #E676. Simply neutral... that's how it is! A medium grey, with the touch of sophistication that is ideal to balance out the decor.

● **Stromboli** #E677. It's called Stromboli and it's a warm, slightly purplish grey, inspired by the rock from the Italian volcano of the same name.

● **Meteorite** #E678. A smoky, burnt grey. A subtle meteorite shade that emerges in the home unexpectedly, in an avant-garde style.

● **Taupe** #E679. An unconditional presence in fashion and decoration, Taupe is a colour between brown and grey. The word derives from the French which means «mole».

● **Alpaca Grey** #E680. Alpaca, a wonderful wool in 22 natural colours... our favourite is the light grey that inspired this shade that will dress the home in a natural, refined fashion.

● **Tobacco** #E681. This smoky brown with a golden touch evokes atmospheres and fragrances that lend dignity to any surface to which it is applied.

● **Sandstone** #E682. The beauty of the nuances and texture of sandstone, a sedimentary rock composed of minerals, gives this medium, natural, highly comforting and contemporary tone its name.

● **Greige** #E683. The ideal proportion for a neutral, timeless balance. A blend between grey and beige, perhaps influenced by the French word «rège» which means «raw silk».

○ **Linen** #E684. Linen, an age-old fabric that brings to mind decorative notes over generations... a creamy, slightly yellowish white that evokes sensations of luminosity, coolness





Trends 2017

Life slips by in tiny  
fractions of time. There is  
a fragment of eternity in  
each instant.



Discover more inspiration  
[colorrevelation.com/neutral](https://colorrevelation.com/neutral)





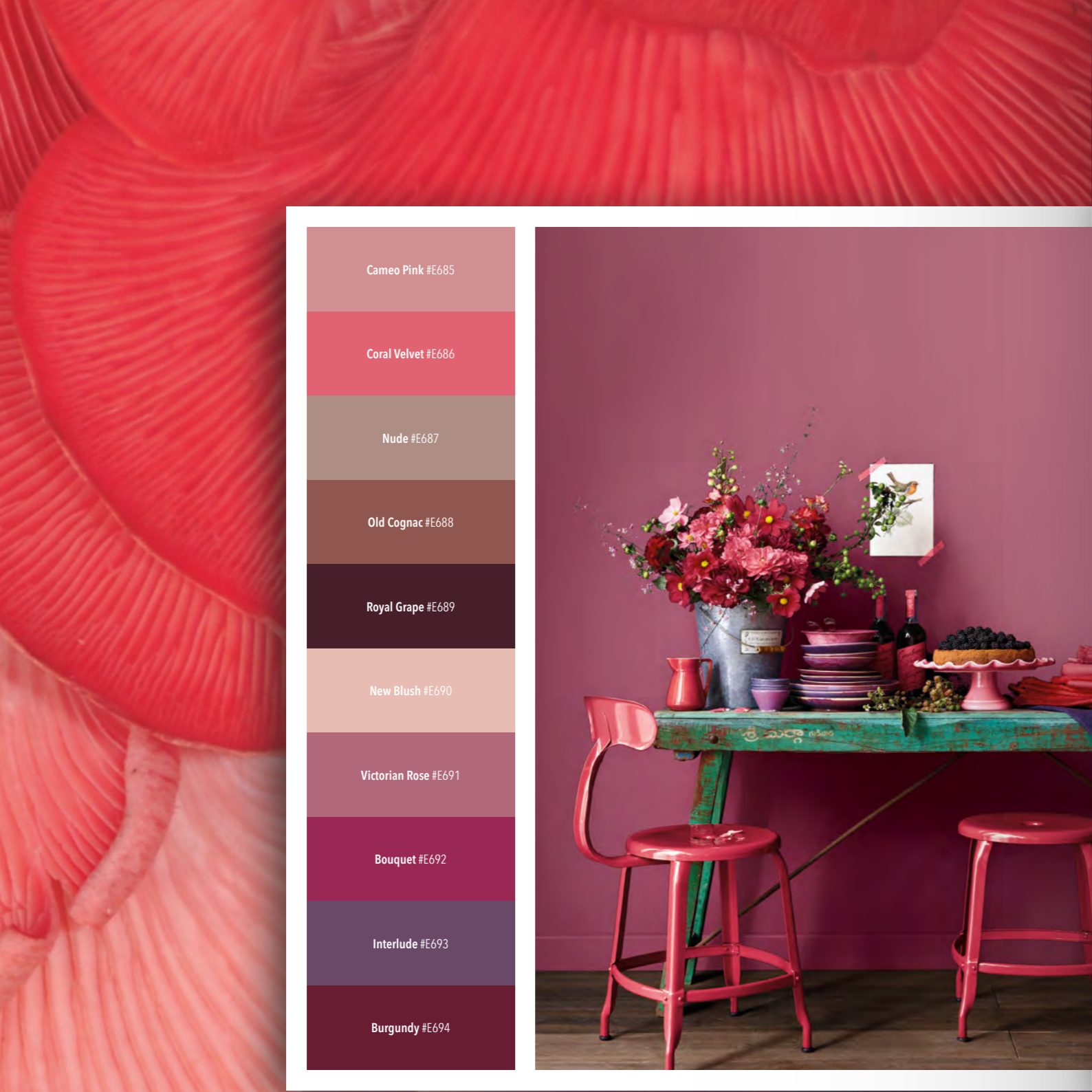
Trends 2017

# Red Revelation

A house is a place that speaks  
of emotions with colours and scents that  
are gentle, sensitive and pleasing.

Color Revelation





- Cameo Pink #E685
- Coral Velvet #E686
- Nude #E687
- Old Cognac #E688
- Royal Grape #E689
- New Blush #E690
- Victorian Rose #E691
- Bouquet #E692
- Interlude #E693
- Burgundy #E694





## Red Revelation

● **Cameo Pink** #E685. The cameo is back... and it's never been as topical! Chic, irresistible and feminine!

● **Coral Velvet** #E686. Neither completely pink nor just orange... this special coral hue has a lavish touch and the elegance of velvet.

● **Nude** #E687. A perfect skin tone that makes you feel like touching it at first sight.

● **Old Cognac** #E688. This colour suggests cosy surroundings and evokes the aromatic notes of an exceptional aged Cognac.

● **Royal Grape** #E689. The grace and glamour of a royal grape on your walls... a reddish dark brown, which is a must-have for classy, tasteful spaces.

● **New Blush** #E690. A pastel, ultra-light blush, with a special pink and orangey touch. Today's trendiest colour... to be applied without hesitation in every nook and cranny of the home.

● **Victorian Rose** #E691. Undeniably British, this pink combines perfectly with the character of 5 o'clock tea in any spot where it is applied.

● **Bouquet** #E692. This colour has a surprising, thrilling effect, like a bouquet of roses blooming splendidly in the heart of the home.

● **Interlude** #E693. This delightful colour, with nuances of summer fruit, is above all an interlude, a brief chromatic moment that can make all the difference in the decor.

● **Burgundy** #E694. An opulent, modern shade of wine, inspired by the typical brownish dark red of the French wine of the same name.

Trends 2017

There is a kind of beauty that  
is universal and axiomatic,  
something that embraces  
us with a certain elusiveness  
as we ponder it.



Discover more inspiration  
[colorrevelation.com/red](http://colorrevelation.com/red)





Trends 2017

# Color of the season

Refined and sophisticated. Contemporary and classic. Balanced and timeless. Verdigris is a spontaneous revelation, the latest trend in interior design.

Verdigris #E706



Discover more inspiration  
[colorrevelation.com/coloroftheseason](http://colorrevelation.com/coloroftheseason)

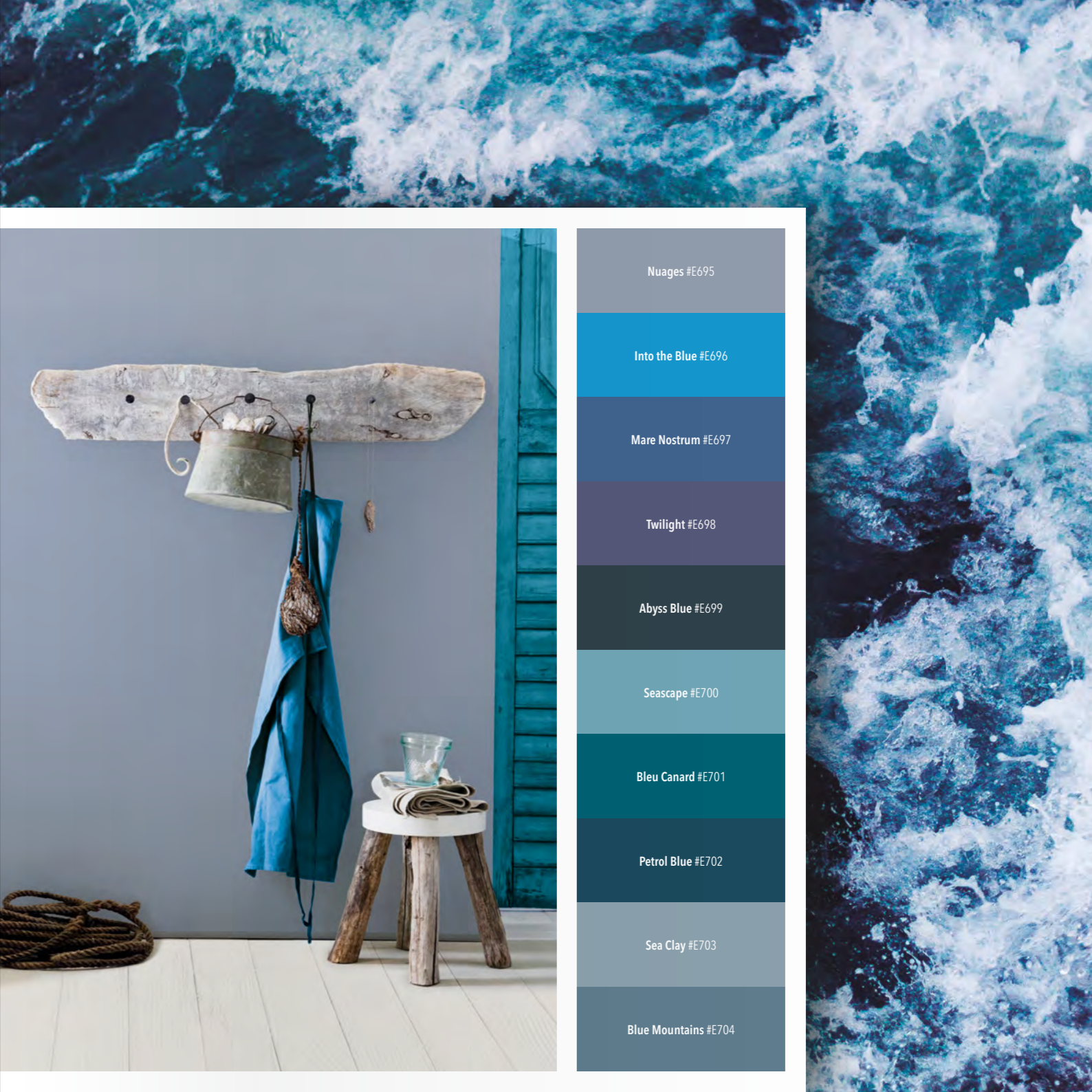


Trends 2017

# Blue Revelation

One can lend colour to calm and  
intensity, to stillness and movement,  
to rest and vitality.

Color Revelation



- Nuages #E695
- Into the Blue #E696
- Mare Nostrum #E697
- Twilight #E698
- Abyss Blue #E699
- Seascape #E700
- Bleu Canard #E701
- Petrol Blue #E702
- Sea Clay #E703
- Blue Mountains #E704

## Blue Revelation

● **Nuages** #E695. This is a cloud blue for dreamers... a poetry-laden colour taking shape in the sky of your imagination! It is neutral and essentially timeless, and it suits any space.

● **Into the Blue** #E696. This is that blue of the immense sky that takes us further away, into the infinite... limitless, it's the blue of the sea, of peace and air. Breathe deeply...

● **Mare Nostrum** #E697. A Latin expression which, through this colour, conveys the history, colour and heritage of a sea that belongs to us all. A unique blue, the colour of the Mediterranean.

● **Twilight** #E698. A violet-like tone inspired by one of the shades the sky takes on at the special hour of dusk... in the transition from the light of day to twilight. Magical!

● **Abyss Blue** #E699. A dark, almost black blue, as if dredged from the abyss, the mysterious depths of the sea... it represents refinement and elegance in their purest state.

● **Seascape** #E700. A chromatic depiction of blue that no-one tires of admiring and that moves everyone... the blue of the sea and the seascape.

● **Bleu Canard** #E701. From the French for teal. A trendy, historical colour in the fashion lexicon, halfway between blue and green, originating in the typical colour of the feathers of certain ducks.

● **Petrol Blue** #E702. This is our petrol blue! Rich, deep and dark, permanently shifting between blue and green. Magically undefinable.

● **Sea Clay** #E703. A natural colour, inspired by sea clay, thousands of years old. A greenish-grey tone that fills up space in a balanced way.

● **Blue Mountains** #E704. Inspired by the diffuse and subtle greyish-blue of the Australian mountain landscape, listed by Unesco as World Heritage, this blue leaves its mark on every space.



Trends 2017

In our deepest dreams  
we can soar in a boundless sky  
and dance in the ocean to the  
rhythm of the waves.



Discover more inspiration  
[colorrevelation.com/blue](http://colorrevelation.com/blue)



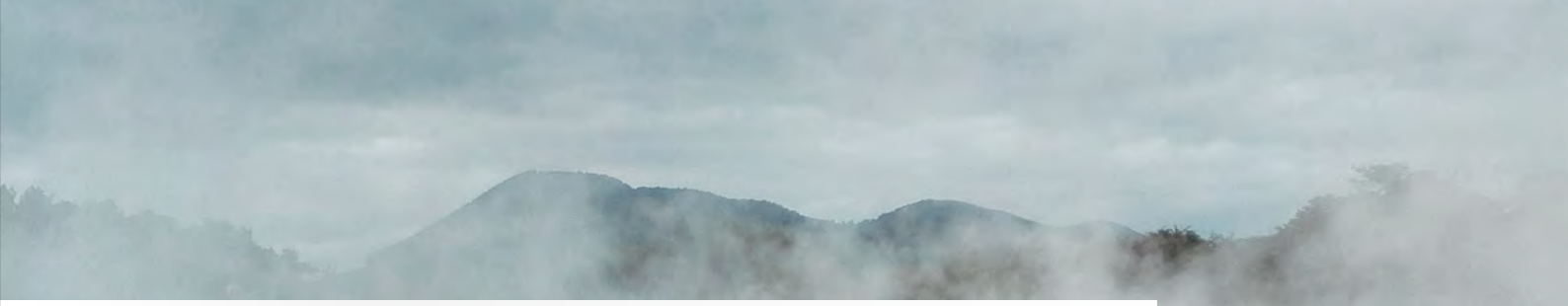


Trends 2017

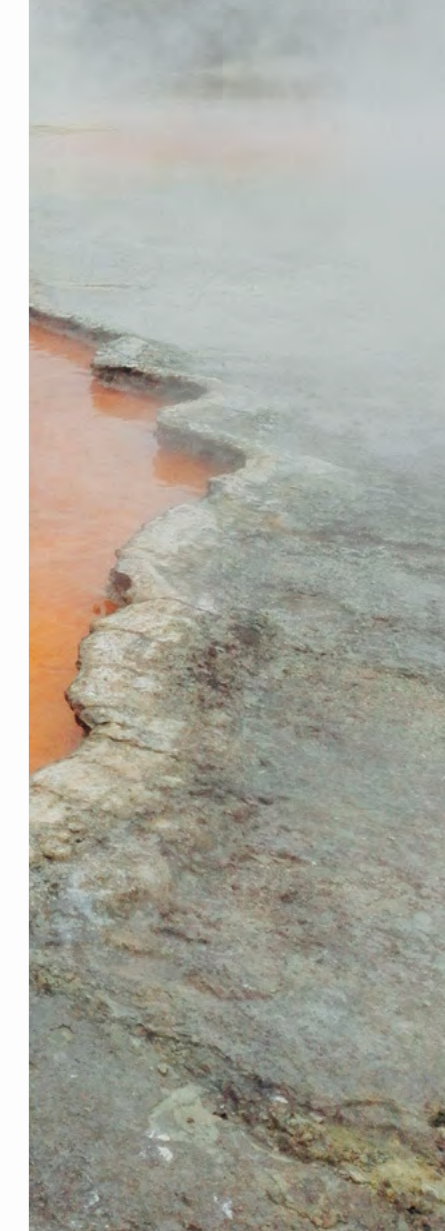
# Green Revelation

With its innate, exuberant vigour,  
the natural devours the fake to reclaim  
what is original and authentic.

Color Revelation



- Caribbean #E705
- Verdigris #E706
- Sumptuous Green #E707
- Celadon #E708
- Lichen #E709
- Taïga #E710
- Khaki Vert #E711
- Vert Chartreuse #E712
- Petrichor #E713
- Mustard #E714





## Green Revelation

● **Caribbean #E705.** A cool, aquatic and tropical-like medium green that evokes the Caribbean Sea and its idyllic scenery... Embark on this journey.

● **Verdigris #E706.** The name given to the historic bluish-green pigment resulting from the oxidation of copper. Today, this shade combines with current trends to reveal the most elegant colour of the year.

● **Sumptuous Green #E707.** A sumptuous green with precious emerald nuances that carries us through exuberant forests... that's what this rich, noble and deep hue is like.

● **Celadon #E708.** Delicate and sophisticated, celadon is inspired by the greyish light green nuances typical of the Chinese porcelain of the same name.

● **Lichen #E709.** An organism formed by a fungus and an alga, lichen green is also the name of a colour used in decoration and fashion to mean greyish light green tones.

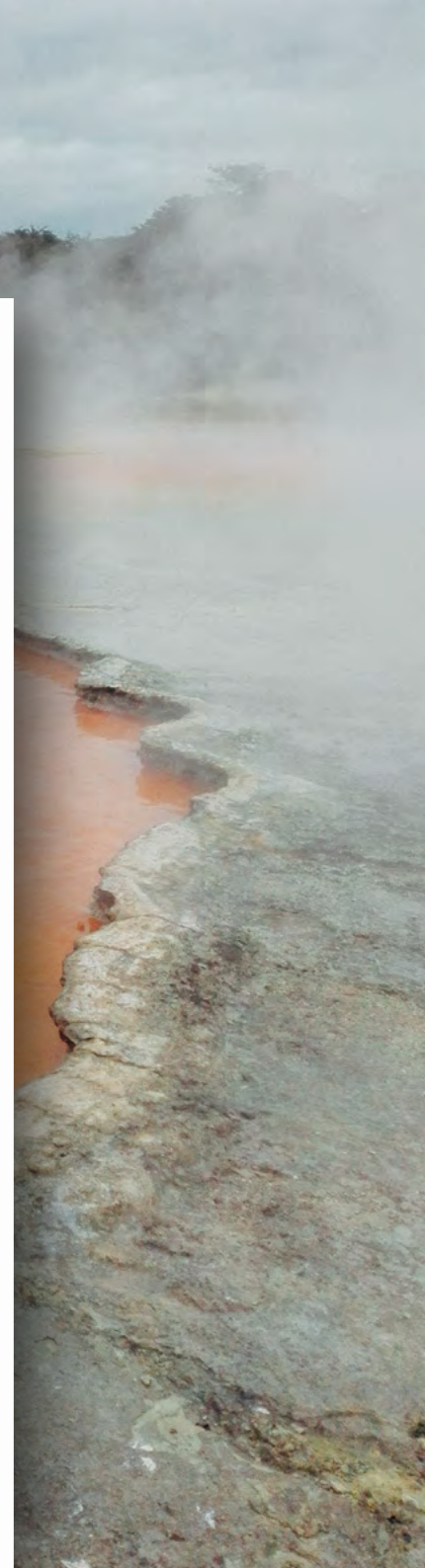
● **Taiga #E710.** This dark spruce green is inspired by the ambiance of the great northern coniferous forests. An appeal to our jungle senses which awaken indescribable natural instincts.

● **Khaki Vert #E711.** The word derives from the Persian «khak» which means dust or the colour of earth. Used by armies as camouflage, this greenish khaki is today a must-have colour in fashion.

● **Vert Chartreuse #E712.** This yellowish green is inspired by «Chartreuse», a French liqueur whose making remains a secret. Its recipe is reputed to comprise 130 herbs, including lemon balm, marjoram, lavender, sage, thyme...

● **Petrichor #E713.** Petrichor is a golden earthy shade inspired by the English word that defines the subtle aroma of the first rains, after a long spell of warm, dry weather.

● **Mustard #E714.** A colour used mainly in fashion and decoration. A shady yellow which, applied in the right proportion, turns out to be a daring, elegant solution for the decor.





Trends 2017

With its innate, exuberant  
vigour, the natural devours the  
fake to reclaim what is original  
and authentic.



Discover more inspiration  
[colorrevelation.com/green](https://colorrevelation.com/green)

## Colour is for everyone

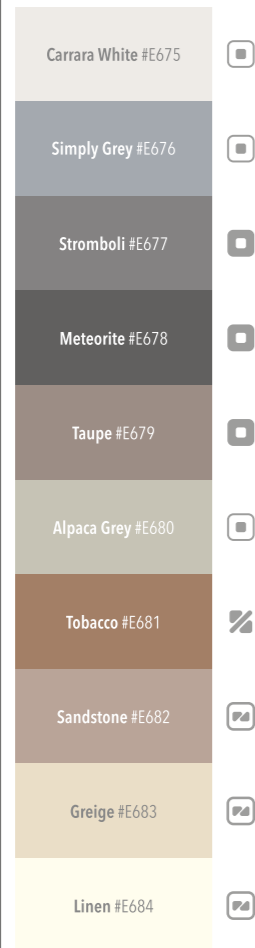
Always at the forefront of colour and innovation, CIN has adopted the universal colour code for the colour blind, Color ADD®. This is a monochrome graphic code that enables the colour blind to identify colours

in a quick and simple way through a process of logical association that is easy to memorise. The code starts using primary colours (blue, red and yellow), represented by symbols, which are then composed into secondary colours.

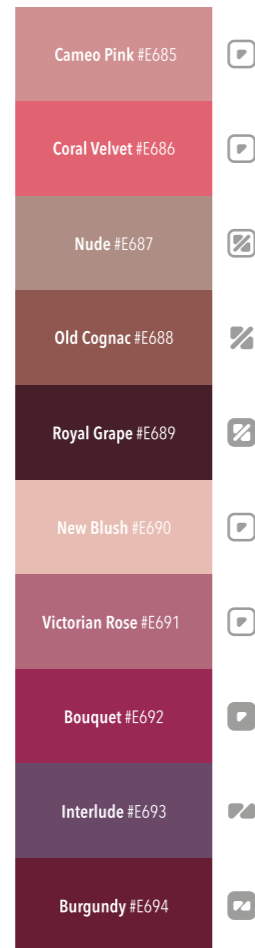
Two more shapes are added to the primary colour symbols to represent white and black. When combined with other colours, these will turn them either lighter or darker.



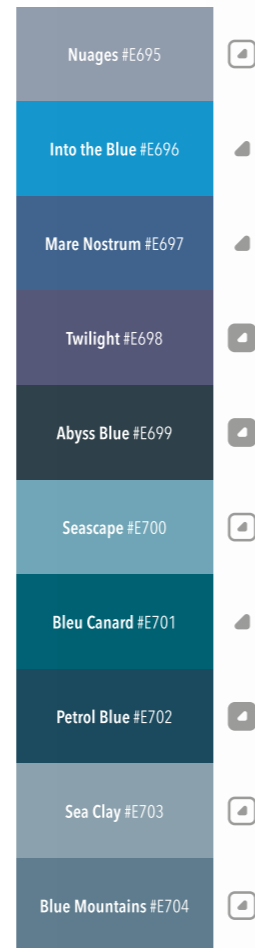
### Neutral Revelation



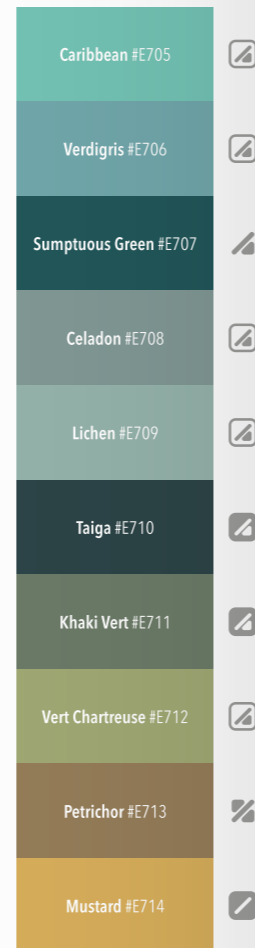
### Red Revelation



### Blue Revelation



### Green Revelation



## Paint before you paint. Choose, step by step.

### discover

Set out to discover the colours most used this year. If your range of choices is open, please view the CIN Colour Catalogues and choose the right colour for your wall.

### create

If you happen to come across a colour you like, bring us a sample: paper, fabric, ceramic, wood or any other material will do. Then, head off to a CIN store and see how we can create the exact same colour from your sample.

### simulate

Before painting, take a photograph of the space you wish to paint and upload your photograph in our website. Using the CIN Colour Simulator you can see your space in the colours you have imagined and also others that might work well. charge, which you can take home and combine with the other colours already decorating your home.

### combine

CIN stores can provide you with a series of small colour cards free of charge, which you can take home and combine with the other colours already decorating your home.

### test

Before you paint, try out the colour on your wall by taking home with you a small tin of colour (TESTiT). Pick a discreet place in which to test, let the paint dry and wait to find out if the colour makes the final cut.

### photograph

Another way to turn a colour you like into a CIN paint is to photograph it. If you have an iPhone, download the CIN Colour Spy app. Using this app you will immediately identify the CIN reference that matches the colour you have photographed, and you can take the paint home with you.

## ChromaGuide

To find out more CIN colours, we recommend you to explore our ChromaGuide fan deck. There you will find 1650 new and unique colours, specially formulated for interior walls. Please visit our website: [www.chromaguide.com](http://www.chromaguide.com)

### Discover our website

Discover our products and the latest news on the brand at [www.cin.com](http://www.cin.com)

### Facebook

Share your colour experiences with us and keep up to date with the brand's most recent activities at [www.facebook.com/CINcoatings](http://www.facebook.com/CINcoatings)

### CIN products

The colours shown here can be tinted using the CIN Colormix 3G system, in the following products:

#### For walls and ceilings:

- Cashmere
- VinylMatt
- VinylClean
- VinylSoft
- VinylSilk
- Cinacryl (matt, satin and glossy)
- Cináqua
- TESTiT

#### For woods and metals:

- Sintecin (matt, satin and glossy)
- Cinofer Liso

## Personalised assistance

For a more personalized assistance please visit a CIN store or contact our Customer Service at [customerservice@cin.com](mailto:customerservice@cin.com)

### Our Brand

Genuine Portuguese company since 1917, CIN is a reference in the coating market. CIN's innovative colours stem from years of research that have led to products of the highest quality with the best performance and unique solutions for indoors and outdoors.

*Selecting the colour is one of the most important moments when decorating a space. CIN is aware of this, and has made every effort to ensure faithful reproduction of the colours in this catalogue. However, due to the limitations of printing techniques, the colours may show differences from the original. We recommend, therefore, making a colour test on the surface to be painted before any final application using TESTiT. The test enable customers to make an informed choice and CIN is not responsible for the consequences of their choice or its application.*



[www.colorrevelation.com](http://www.colorrevelation.com)

Follow us on facebook



**CIN**

**CIN - Corporação Industrial do Norte, S. A.**

Av. de Dom Mendo nº 831 (antes EN13 km6) - 4474-009 Maia - Portugal  
T +351 229 405 000 - customerservice@cin.com

[www.cin.com](http://www.cin.com)

**CIN Valentine, S.A.U.**

P. I. Can Milans - Riera Seca, 1 - 08110 Montcada i Reixac - España  
T +34 93 565 66 00 - customerservice.es@cin.com

**Pinturas CIN Canarias, S.A.U.**

P. I. Güïmar, Manzana 13, Parcela 2 - 38509 Güïmar - Tenerife  
España | T +34 922 505 330 - customerservice.es@cincanarias.com

**CIN Celliose, S.A. - Division CIN Déco**

Chemin de la Verrerie - BP 58 - 69492 Pierre Bénite Cedex - France  
T +33 (0) 4 72 39 77 35 - customerservice.fr@cin.com

**CIN Coatings Polska Sp. z o.o.**

ul. Maciejki 5/7 - 02-181 Warszawa - Polska  
T +48 22 8681068 - T +48 518 194 418 - cinwarszawa@farby-cin.pl

**Tintas CIN Angola, S.A.**

R. Pedro Álvares Cabral, nº 21 - Cx Postal 788 - Benguela - Angola  
T +244 222 397 527 - tcin@cinangola.co.ao

**Tintas CIN de Moçambique, S.A.**

Av. das Indústrias, 2507 - Machava - Moçambique  
T +258 21 748 012 - geral@cin.co.mz